

## CATV WALL SOCKET

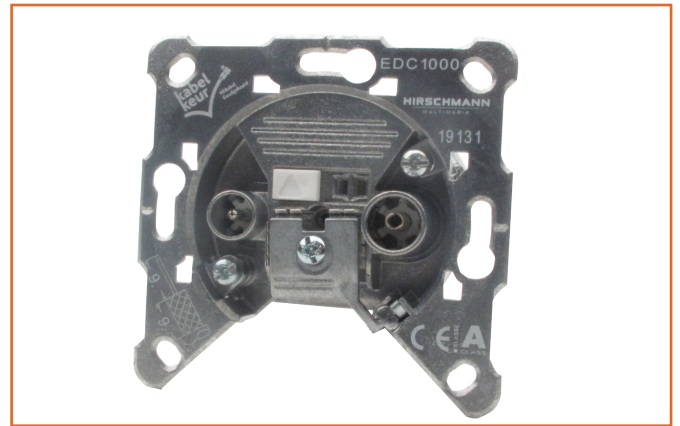


### SHOP EDC 1000

Article number 695003008

PRODUCT CATEGORY: CATV

STATUS: AVAILABLE



## Product

CATV WALL SOCKET  
SHOP EDC 1000

Selective 2-hole special antenna outlet. Universal socket frame with fracture edges on frame corners suitable for all socket types. Reduced in depth and diameter for better fit and more space for coax cables. Lockable hinged clamp and push clamp for easy mounting. Plug-in clamp technology. New generation claw fixation and fitting claw shape. Inner conductor clamp in centre of outlet. EN Class A screening efficiency. Galvanic isolation of the outlet inner conductor up to 2kV. Especially designed for the Dutch CATV market: Kabel Keur Certified.



## Properties

<b>5 Year</b> Warranty	<b>Class A</b> Screening	<b>High</b> Durability
<b>1 GHz</b> Ready	<b>Digital &amp;</b> 3D ready	<b>Certified</b> Product
<b>MoCA</b> Compliant	<b>Low</b> Loss	

## Certificates

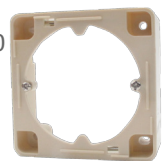


## Included

- 1 piece cover plate AD 350  
Article number 910460202



- 1 piece surfaced mounted frame AR 20  
Article number 910382002



## Tools

- 1 piece Cable stripper KST 3  
Article number 695020385



## Instruction video

[www.hirschmann-multimedia.net/montagefilm-WCD](http://www.hirschmann-multimedia.net/montagefilm-WCD)

## Instruction card

[www.hirschmann-multimedia.net/installation/installatie-schema](http://www.hirschmann-multimedia.net/installation/installatie-schema)

## Mechanical Specifications

Dimensions hxxwx  
70 x 68 x 31 mm

Weight  
0.19 kg

Color  
Ivory

## PRODUCTSHEET

### SHOP EDC 1000

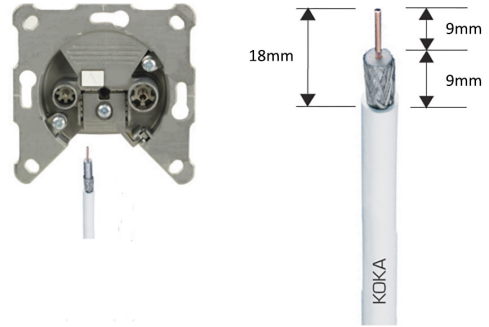
### CATV WALL SOCKET

## Specifications

Mechanics	
Screening effectiveness dB	Class A (> 85 dB, EN 50083-2)
Connected load	
Inner conductor FM/TV	
Inner conductor input	< 2KVeFF/50 Hz, 1 minute max.
Outer conductor FM/TV	
Inner conductor FM/TV	< 2KVeFF/50 Hz, 1 minute max.
Connection impedance	75 Ω
Operating conditions	
Temperature	-25°C to +55°C, local fixed, weather protected (ETSI 300 019-1-3)
Reliability	>1.000.000 h (Belcore @ 25 °C)

Item	Frequency range (MHz)	Typical value	Remarks
Insertion loss In - FM	5 - 65	24 dB	IEC 60728-4
	87.5 - 108	1.2 dB	
	120 - 1006	30 dB	
Insertion Loss In - TV	5 - 65	0.5 dB	IEC 60728-4
	87.5 - 108	18 dB	
	120 - 1006	0.5 dB	
Isolation FM/TV	5 - 65	24 dB	IEC 60728-4
	87.5 - 108	18 dB	
	120 - 1006	30 dB	
Return Loss In	5 - 65	20 dB	IEC 60728-3
	87.5 - 108	18 dB	
	120 - 1006	20 dB	
Return Loss FM Output	87.5 - 108	18 dB	IEC 60728-4
Return Loss TV Output	5 - 65	20 dB	IEC 60728-3
	120 - 1006	20 dB	
	Screening effectiveness	5 - 15	
	30 - 300	85 dB	
	300 - 470	80 dB	
	470 - 1006	75 dB	
Impedance	5 - 1006	75 Ohm	EN 50083-4

## Wiring diagram



## Related product - GHV 41MX

Article number 695020431



## Related product - KOKA 9 TS

Article number 198799801



## Related product - FEKAB 759

Article number 695003000



## Contact

📍 Pampuslaan 170  
1382 JS WEESP

✉ info@hirschmann.nl

☎ NL 31 (0)294 46 25 55  
BE 32 (0)2 46 13 095

🌐 [www.linkedin.com/company/hirschmann-multimedia-b.v.](http://www.linkedin.com/company/hirschmann-multimedia-b.v.)

📘 [www.facebook.com/hirschmann.multimedia](http://www.facebook.com/hirschmann.multimedia)

📺 [www.youtube.com/HirschmannMultimedia](http://www.youtube.com/HirschmannMultimedia)

## Hirschmann Multimedia B.V.

Hirschmann Multimedia B.V. is an international knowledge company and manufacturer, located in Weesp - The Netherlands. Hirschmann Multimedia focusses on leading the market by being innovative, flexible and renewing.

### Hirschmann Multimedia Products (HMP):

Serving the retail and installer market, Hirschmann Multimedia Products is expanding from The Netherlands and Belgium towards 16 other European countries as of 2014. Through a qualified and selected dealer and installer network, HMP provides in products for COAX, IP and satellite systems.